



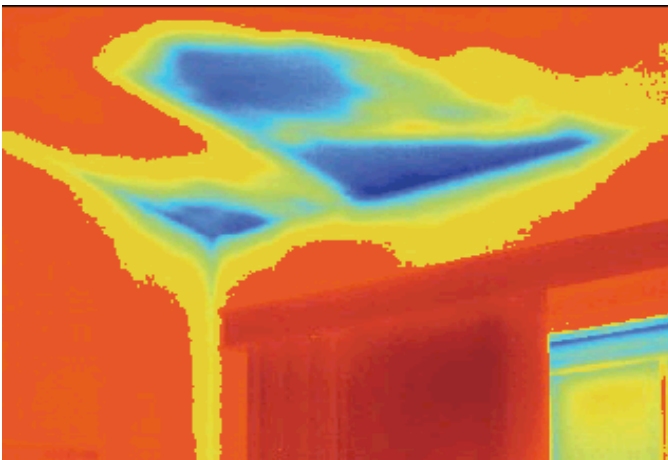
Environmental Solutions Group

Thermal Imaging Services

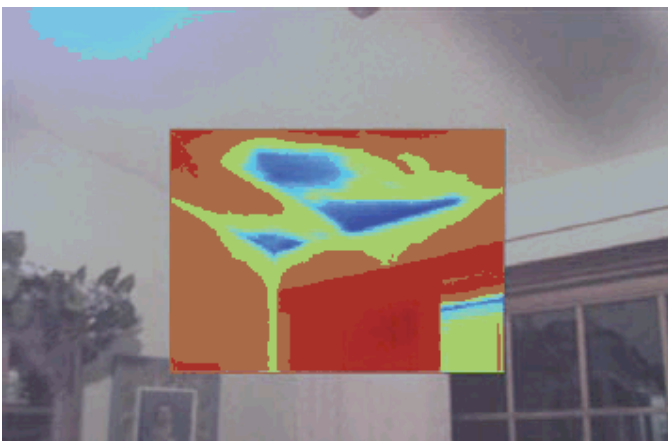
Do you ever have projects where the owner just does not want anything disturbed but you know through conventional inspection methods that there is more than meets the eye? Or you are not sure of the extent of the impacted area and wish to avoid exhaustive and time consuming moisture mapping? In these cases a picture is priceless! ESG can help home inspectors, remediation contractor, insurance adjustors and environmental investigators through its expanded thermal imaging services .

Moisture presence in roofs and walls can be quickly detected with a sensitive infrared camera and confirmed with a moisture meter. ESG utilizes the new Fluke TiR2-FT with IR Fusion technology which allows a picture-in-picture view of the plain image and the thermal image, allowing positive identification of the affected material. This technology also allows you to show the client exactly where the issues lie.

Infrared inspection is a quick, non-intrusive method of locating moisture in the building envelope. Infrared technology does not detect mold, but it does detect temperature differentials indicative of excess moisture which ultimately lead to mold growth.



The pictures to the left indicate a corner in a room where the ceiling has been impacted with moisture. The top picture is a full infrared image and the bottom picture shows the image with infusion technology. We think you will agree that the bottom picture makes it easier to see the affected area and explain the situation to your client or an insurance adjustor.



ESG is ready to help you determine the extent of the impacted area on your next moisture intrusion project.

Please call Shawn Tucker or Craig Whittaker at 336-373-1538 or visit our website at www.esgtesting.com to learn more about ESG's thermal imaging services or the many other indoor air quality services offered.